



## **RACE BOOK**


### **Shimano Enduro Tour**






Round 3 Shimano Enduro Tour  
Round 2 Asia Pacific Continental  
Series  
December 2, 2018  
Mt Buller, Victoria, Australia

<b>LOCATION</b>	Mt Buller Victoria, Australia <a href="#">Google Map</a>	
<b>RACE VILLAGE</b>	Mt Buller Village Square Summit Road Mt Buller	
<b>WEBSITE</b>	<a href="http://www.emsenduro.com">www.emsenduro.com</a>	
<b>SCHEDULE</b>	Course description release	Monday 26 <sup>th</sup> November 2018. Course map is on last page.
	Race Registration	<u>Check-in / plate pick up:</u> Saturday 1st December: 08:30 – 15h00 Sunday 2 <sup>nd</sup> December: 07h00  <u>Rider Briefing is in this schedule due to the staggered starts.</u>
	Race Day	Sunday 2 <sup>nd</sup> December, 8am start for Juniors, Challenge, Elite, U21 and then Masters.
<b>CATEGORIES</b>	<div> <div> WOMEN   Junior WOMEN   Under 21 WOMEN   Challenge WOMEN   Master WOMEN   Elite <i>EWS uses December 31, 2018 as the age calculation date. Minimum age 17 (Year of birth 2001).</i> </div> <div> MEN   Junior MEN   Under 21 MEN   Challenge MEN   Master MEN   Elite </div> </div>	
<b>EMBA MEMBERSHIPS and LICENSE REQUIREMENTS</b>	<p><b>EWS Memberships</b> Riders must be EWS members in order to be eligible to collect EWS Continental Series ranking points / be added to the EWS Reserved List. Riders MUST have the membership before the race – points will not be assigned retrospectively. <b><u>BUY/RENEW 2018 MEMBERSHIPS</u></b></p> <p><b>Qualifying Criteria</b> Top ranked EWS members competing in the 2018 Series will be added to the EWS Reserved List (to be published December 2018) and will be eligible for priority registration for all the 2019 EWS Rounds. The Reserve Entry List comprises of:  – Top 300 ranked Men, 75 ranked Women, 100 U21 Men, 20 U21 Women, 50 Master 40+ Men, and 20 Master 35+ Women riders from the Enduro Global Ranking ; comprising of points scored at all EWS, EWS Continental and EWS Qualifier events.  – Top 5 U21 at every EWS event in the previous year  – Top 5 Masters at every EWS event in the previous year  – Top 3 riders of every official EWS category at every EWS Continental event in the previous year. (providing the podium finishers are EWS members).  – Winner of each official EWS category in every EWS Qualifier event in the previous year . (providing the winner is an EWS member).</p> <p>The EWS Shimano Enduro Tasmania is <b>NOT</b> sanctioned by Mountain Bike Australia (MTBA) / Cycling Australia / UCI.</p> <p>Please insure you have your own personal accident insurance to cover you while racing in the Shimano Enduro Tasmania and Challenge Tasmania events.</p>	
<b>TIMING TRANSPONDERS</b>	<p>Timing transponders will be issued to riders when they collect their race pack.</p> <p>Riders should check-in at the Village Square stage at least 10 minutes before their scheduled start.</p> <p><u>Transponders should be worn on the wrist. Please ensure that if you are wearing a smart watch that you wear it on the opposite wrist.</u></p> <p>Timing transponders will be collected at the finish of the race. Racers who withdraw or do not complete the race should return the transponders to the finish. Timing Tent will be located next to the Village Square stage. Lost or damaged transponders will be assessed a \$150 AUD replacement fee.</p>	
<b>RIDER BRIEFING</b>	This is your rider briefing but please also keep check on social media for any unforeseeable	

	<p>changes to race day format.</p> <p>Racers should also check <a href="https://www.facebook.com/EMSEnduro/">https://www.facebook.com/EMSEnduro/</a> for important event updates during the race weekend.</p>
<b>COURSE DESCRIPTION / MAPS</b>	<p>Distance: 31km full with Juniors and Challenge at 20km</p> <p>Terrain Type: Mt Buller is an alpine resort so conditions are alpine. Race day will see a cool top of 10 so be prepared for cooler weather. The stages will suit endure style bikes.</p> <p>Link to <a href="#">Trailforks map</a></p> <p>Stage order:</p> <p><b>Stage 1.</b> Outlaw Express / Yellow Post</p> <p><b>Stage 2.</b> Trigger Happy</p> <p><b>Stage 3.</b> Stonefly (E-bike, Junior and Challenge do not do Stage 3)</p> <p><b>Stage 4.</b> Clancys Run</p> <p><b>Shuttle to Stage 5</b> (for all categories except ebike) Shuttle Pick up will be at the bottom of stage 1&amp;5 – Northside Chair)</p> <p><b>Stage 5.</b> ABOM</p> <p><b>Shuttle to stage 6</b> (for all categories except ebike) – Shuttle Pick up will be at the bottom of stage 1&amp;5 Northside Chair)</p> <p><b>Stage 6.</b> Urban stage – finish in the Village square.</p>
<b>SHUTTLES</b>	<p>Shuttling available on Saturday at a cost to the rider. Please book through <a href="#">All Terrain Cycles</a> as there will not be private shuttles. Shuttles will depart from the bottom of Lower Tyrol Carpark of the trails</p> <p>Shuttles for Sunday (only after stage 4) will be included in race entry fee and will leave from Lower Tyrol Carpark.</p>
<b>TECH ZONE</b>	<p>There will be a Tech Zone located near Alberg Hotel on Summit Road near shuttle pick up. There is no outside assistance allowed on race day outside of this Tech Zone (exception for Challenge and Junior riders).</p> <p>During practice days, riders are welcome to use their private / team techs based in the Race Village.</p>
<b>WATER</b>	<p>Will be located at the top of North side chair (Spurs) – look for the water signs near the start of Stage 5.</p>
<b>TOILETS</b>	<p>Public toilets will be located in</p> <ol style="list-style-type: none"> <li>1. Village Square</li> <li>2. Carpark on route to stage 2, 3 &amp; 4</li> <li>3. Hut at the end of stage 2 &amp; 3</li> </ol>
<b>CATEGORIES, START ORDER, and SEEDING</b>	<p>The Start Order is as follows.</p> <p>Ebike</p> <p>Junior Women</p> <p>Junior Men</p> <p>Challenger</p> <p>Elite Men</p> <p>Elite Women</p> <p>U21 Women</p> <p>Masters Women</p> <p>U21 Men</p> <p>Masters Men</p> <p><i>EWS uses December 31, 2018 as the age calculation date</i></p>
<b>START LIST</b>	<p>Start List will be published once onsite check-in closes</p>

<b>START PROCEDURES</b>	<p>Racers will have pre-assigned start time from the Village Square only and must collect your timing chip as you roll off from the start line at the Stage.</p> <p>All other stage start times will be based on first come first ride, you must complete all stages in stage order (1 through to 6)</p> <p>The Race Director has the final right to change start times during the race in case of any unforeseen circumstances.</p> <p>Late racers will be given the following penalties: up to 5 minutes late = 1-minute penalty.</p> <p>5+ minutes late = 5-minute penalty</p> <p>If a racer is delayed reaching the overall time as a result of assisting an injured rider or due to some other exceptional circumstances beyond the racer's control (which the rider can provide evidence for), the time penalty may be waived, and / or the racer may be permitted to repeat the stage if time permits or a calmatime will be given based on other stage times. Any racer affected by a 'significant incident' during a transition or special stage should immediately report to the finish or start official of the affected stage (as applicable).</p>
<b>RACE RULES</b>	<p><a href="http://www.enduroworldseries.com/rule-book/">http://www.enduroworldseries.com/rule-book/</a></p> <p>The Race Director is authorized to give additional penalties that are not listed in the EWS rules in the case of a rider who fails to respect the other riders, the spirit of the sport, the environment or the organization.</p>
<b>PROTECTION RULES</b>	<p>Full face mandatory during the special stages only (including official practice day), open face helmets can be worn during the liaison stages. A detachable mouth piece is acceptable. Juniors are to wear knee pads and covered elbows (long sleeves or elbow pads).</p>
<b>COMPLAINTS REGARDING THE PROGRESS OF THE STAGES, BEHAVIOR OF THE OTHER</b>	<p>Complaints regarding the progress of the stages, results, behaviour of the other racers and any other sort of issue must be presented to the Race Director within 30minutes from the posting of the results.</p> <p>Race Director: Ian Harwood +61 404 326 169</p>
<b>LIVE TIMING and RESULTS</b>	<p>Live Timing and Results will be posted at <a href="http://www.sportident.co.uk/results/2018/ShimanoEnduroTourMtBuller/">http://www.sportident.co.uk/results/2018/ShimanoEnduroTourMtBuller/</a></p>
<b>AWARDS</b>	<p>Time: 15:00 Location: Village Main Stage Top 3 from each category need to be in attendance.</p>
<b>PRIZE MONEY</b>	<p>\$3000 AUD total Elite Men: 1<sup>st</sup> \$750   2<sup>nd</sup> \$500   3<sup>rd</sup> \$250 Elite Women: 1<sup>st</sup> \$750   2<sup>nd</sup> \$500   3<sup>rd</sup> \$250</p> <p>Shimano Enduro Tour Series winners will also be announced at these presentations.</p> <p>Elite Men: 1<sup>st</sup> \$2500   2<sup>nd</sup> \$1500   3<sup>rd</sup> \$1000 Elite Women: 1<sup>st</sup> \$2500   2<sup>nd</sup> \$1500   3<sup>rd</sup> \$1000</p> <p>Random draw prize throwing will commence after presentations. Please do not park your bike in front of the stage.</p>
<b>BIKE WASH</b>	<p>Krush Bike wash will be accessible at the bike wash station behind the village square.</p>
<b>TYRES</b>	<p>Maxxis will have plenty of tire options available at the race village on Saturday and Sunday</p>
<b>EXPO</b>	<p><b>Intense Cycles Australia</b> will have the new Tazer e-bike available for demo plus intense enduro bikes for demo. Bring pedals and ID</p>

	<p><b>Krush</b> - bike wash will have plenty of product on hand to keep your rig squeezy clean.</p> <p><b>EMS Enduro</b> - merchandise can be purchased from registration.</p> <p><b>Bike Buller</b> – showing off their hill</p> <p>There are also plenty of other exhibitor's on display including Fox, Scram, Rapid Ascent, Falls Creek and NSD</p>
<b>MERCH</b>	<p>Shimano Enduro Tour Hoodies, t-shirts and cowbells (limited stock get in quick)</p>  <p>Cowbells - \$2 from every cowbell will be donated to #strengthforjared</p>
<b>EMERGENCY SERVICES/ FIRST AID MANAGEMENT</b>	<p>Emergency Dispatch: Ian Harwood 0404 326 169 or Rebecca Harwood on 0499 303 280</p> <p>Onsite medical team will be located in the race Village</p>
<b>MEDICAL FACILITIES</b>	<p>Emergency Notification Emergency Services (Police, Fire Ambulance): 000</p> <p>Mansfield Police <a href="tel:0357752555">(03) 5775 2555</a></p> <p>Victorian Fire Service 000 (stations: Mansfield CFA) – current fire rating LOW-Moderate (<a href="#">CFA</a>)</p> <p>Hospital – Mansfield 53 Highett St, Mansfield VIC 3722 <a href="tel:0357758800">(03) 5775 8800</a></p>
<b>GROCERY STORES/ MARKETS</b>	<p>Mt Buller is limited in terms of supplies and services. Mt Buller does not have a full range supermarket – stock up in Mansfield on the way up.</p>
<b>INSURANCE</b>	<p>Racers are responsible for having their own personal accident / travel insurance to cover them while training and racing in the Shimano Enduro Tour. Please note this event is not sanctioned by MTBA.</p>
<b>INJURY/ILLNESS PERFORMANCE PROJECT</b>	<p>During all EWS qualifying events, medical staff may collect preliminary rider injury and illness data, in order to monitor the magnitude of issues that occur. As part of your participation this will include your medical data should you sustain an injury (or illness) during the event.</p> <p>You will not be identifiable at any stage during any collection of this data, and any data collected on you will always be anonymised and kept strictly confidential. The information gathered may be used by the EWS/EMBA to help guide and direct future rider health and injury/illness prevention initiatives. You do not need to do anything as part of this data collection.</p>

	<p>NB: If you decide you do not want your medical data to be collected during an event you must advise the organisers in writing. You are free to withdraw from this data recording at any stage, without penalty, and you do not need to explain your reasons for doing so.</p> <p>Please make sure you are aware of the concussion ruling surround this event. Should a concussion be confirmed by a medical doctor, the athlete is responsible for completing a 'graduated return to activity' plan. <a href="#">Full details here</a></p>
<b>CONTACTS</b> <b>Shimano Enduro</b> <b>Tasmania</b>	<p>Race Director: Ian Harwood <a href="mailto:ian@emsaustralia.net.au">ian@emsaustralia.net.au</a> +61 404 326 169</p> <p>Athlete Manager: Rebecca Harwood <a href="mailto:rebecca@emsaustralia.net.au">rebecca@emsaustralia.net.au</a> +61 499 303 280</p> <p>Media Manager: Courtney Akrigg <a href="mailto:media@emsaustralia.net.au">media@emsaustralia.net.au</a> 0411 167 975</p> <p>The Course Guy: Andy Noble +61 417 649 698</p> <p>Accommodation &amp; Expo: Kat Roberto <a href="mailto:info@emsaustralia.net.au">info@emsaustralia.net.au</a> +61 435 855 321</p>
<b>SOCIAL MEDIA</b>	<div>      </div> <ul style="list-style-type: none"> <li>• @emsenduro</li> <li>• #shimanoendurotour</li> <li>• #emsenduro @emsenduro</li> <li>• @bikebuller</li> <li>• @world_enduro</li> </ul> <p><a href="https://www.facebook.com/EMSEnduro/">https://www.facebook.com/EMSEnduro/</a></p> <p><a href="https://www.instagram.com/emsenduro/">https://www.instagram.com/emsenduro/</a></p>

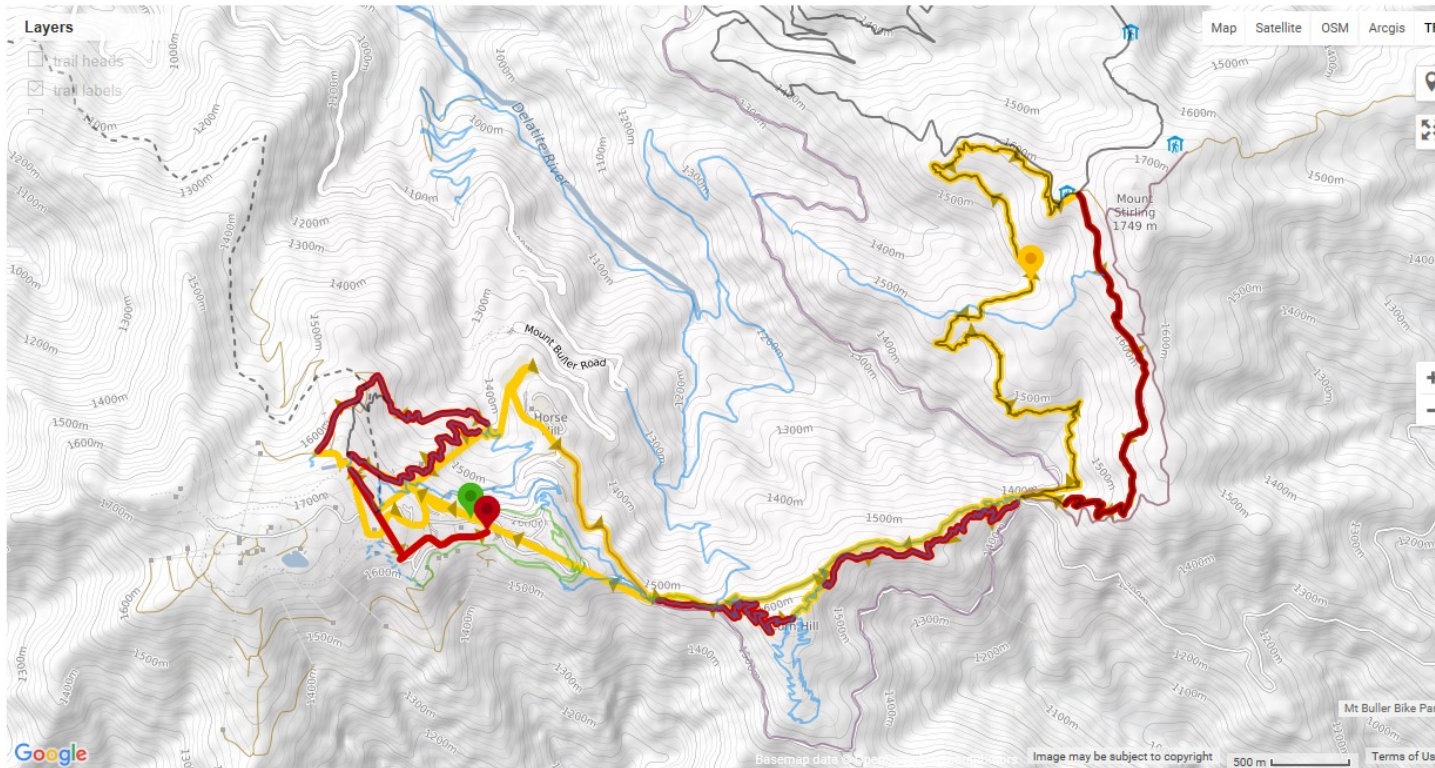
**THANK YOU**

PARTNERS

# SHIMANO

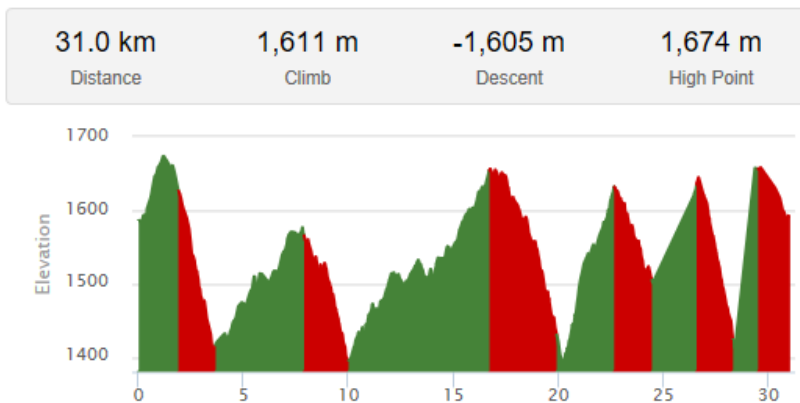






## Route Sections

- 1 Stage 1 Outlaw Express / Yellow
- 2 Stage 2 Trigger Happy
- 3 Stage 3 Stonyfly
- 4 Stage 4 Clancy's Run
- 5 Stage 5 ABOM
- 6 Stage 6 Urban Stage



**Stage 1.** Outlaw Express / Yellow Post

**Stage 2.** Trigger Happy

**Stage 3.** Stonyfly (E-bike, Junior and Challenge do not do Stage 3) Access

**Stage 4.** Clancy's Run

**Shuttle to Stage 5** (for all categories except ebike)

**Stage 5.** ABOM

**Shuttle to stage 6** (for all categories except ebike) shuttle pick up location is the same as the stage 5.

**Stage 6.** Urban stage

Course map for final round of the Shimano Enduro Tour.

Junior and Challenge riders will not complete Stage 3 (Stonyfly).

Shuttles provided after stages 4 and 5.





# Shimano Enduro Tour - Round 3 - Mt Buller weekend schedule



Date	Activity	Location	Details	Book
Friday November 30				
	Unofficial Practice	Mt Buller Trails	Stages will be marked but no marshaling or medical assistance provided	<a href="#">Book now</a>
	Please note gravity trails will not be open until the Friday. Check Bike Buller for more detailed updates			
Saturday December 1				
8:30am - 3:00pm	Registration	Event Village	Collect your race place and timing chip. You must wear your official race plate for practice on Saturday. Full face helmets also required for practice	<a href="#">Book now</a>
9:00am - 3:00pm	Shimano Enduro Tour official practice	Mt Buller Trails	Mt Buller Trails (Shuttling provided by All Terrain Cycles bookings essential)	<a href="#">Book now</a>
11am-6pm	Buller Air Zone	Alpine Center Mt Buller	special exercise classes and trampoline sessions - book direct here (select date and search)	<a href="#">Book online</a>
12pm- 6:30pm	ATC Freeride Jam	Toboggan Slope	Best trick and big whip off comp. 12pm-3pm open qualifiers in jam format. 6-6pm best whip event and best trick event in jam format.	<a href="#">Email to register here</a>
6:30pm	ATC 10th Year Party	Pats Italian	Celebrate 10 years of All Terrain Cycles on Mt Buller with a party at Pats Italian in the Village Square.	<a href="#">More details</a>
8:45pm	Fireworks	Toboggan Slope	Enjoy a firework display from the Toboggan Slope to celebrate the start of Summer 2018/2019	
Sunday December 2				
8:30am- 9:30am	Morning Yoga Class		Start your day with a morning mountain yoga class with Ella from Fields of Yoga. Location TBC.	<a href="#">Click here to register</a>
8:00am	Shimano Enduro Tour Race Start		Riders depart from Mt Buller race village - Starting with the e-bikes then Junior's and Challenge riders followed by the full course riders starting from Elite. Start times to be posted on Saturday. All registered entrants will be provided free shuttles as part of your entry (only on event day).	<a href="#">Book now</a>
10am - 12:30pm	Guided Hike	Clocktower	Meet Romana from High Country Hiking Tours at the Clocktower at 10am for a guided hike on Mt Buller's Little Mt Buller trail.	<a href="#">Click here to register.</a>
11am-4pm	Buller Air Zone	Alpine Session	Jump, climb and play at Mt Buller's Buller Air Zone. Book online or in person from Reception at Alpine Central.	<a href="#">Book online</a>
3:00pm	Presentations	Event Village		